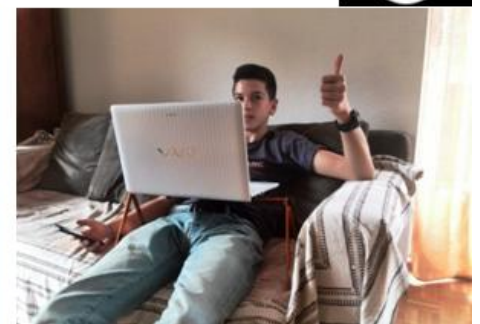


Here is **PlyGo**, the foldable stand that facilitates the use of all kinds of laptops, tablets, smartphones and books, even from resting positions, while avoiding uncomfortable or unhealthy postures, laptop falls, pressures and dangerous overheating



Very portable (24cm, 300g), multifunctional, multiuse, durable, recyclable, colourful, **PlyGo could contribute to your health and well being**

For further information and details on **PlyGo**, please visit: www.plygo.eu

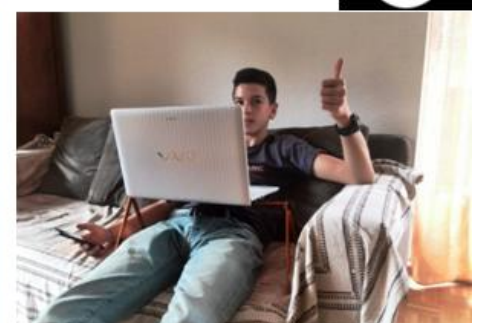


Voici **PlyGo**, le support pliable qui facilite l' utilisation de toutes sortes de PC portables, tablettes, smartphones et livres, même de la position allongée, en évitant postures inconfortables ou nocives, chutes du PC, pressions et surchauffes dangereuses



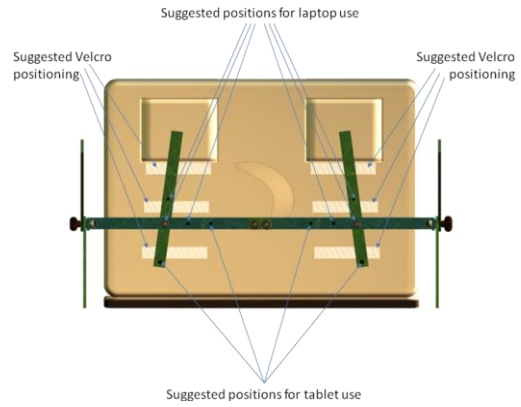
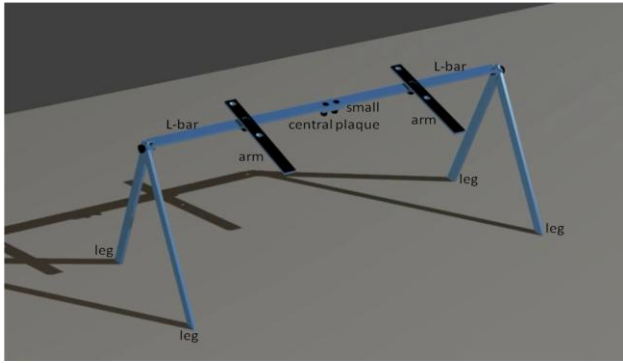
Très portable (24cm-300g), multifonction, multi-usage, durable, recyclable, en couleurs, **PlyGo peut contribuer à votre santé et bien-être.**

Pour plus d' informations et détails sur **PlyGo**, visitez: www.plygo.eu



PLYGO, THE FOLDABLE STAND FOR LAPTOP & TABLET: DESCRIPTION AND INSTRUCTIONS SUMMARY (details at www.plygo.eu)

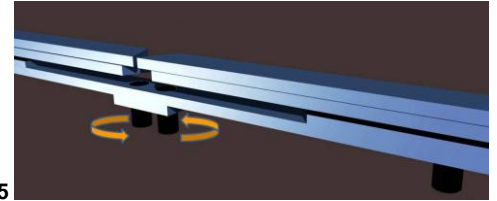
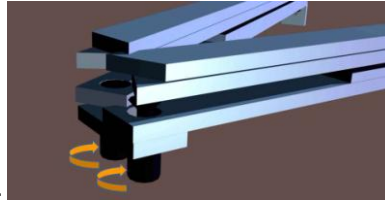
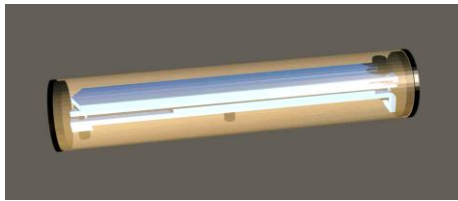
The main components of the foldable laptop stand **PlyGo** are a small central plaque, 2 transversal L-bars, 4 legs, 2 rotating arms covered by Velcros of the "hook" type, and 6 bolt-washer-nut coupling elements. For a good hold of the laptop or tablet on **PlyGo** arms, it is recommended that you stick well to the bottom of the laptop or 4 or 6 of the "wool-loop" Velcro strips supplied (then wait at least 24 hours before placing the laptop on the arms)



1

2

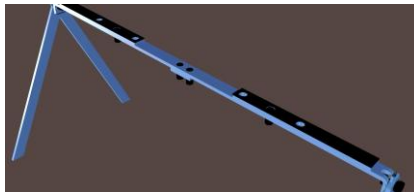
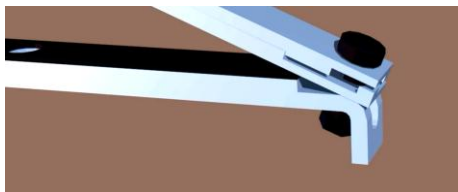
To unfold and set up **PlyGo**, please follow the drawing sequence 3 4 5 6 7 1



3

4

5



6

7

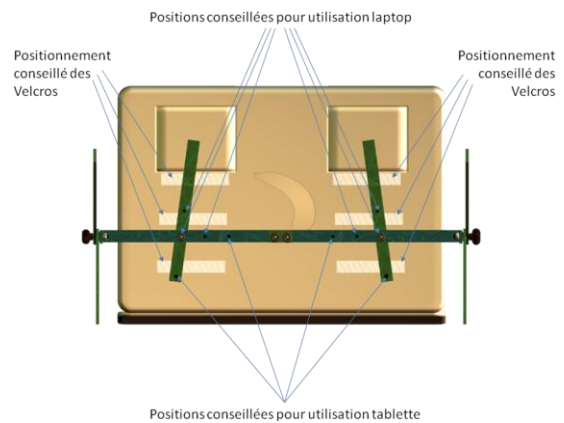
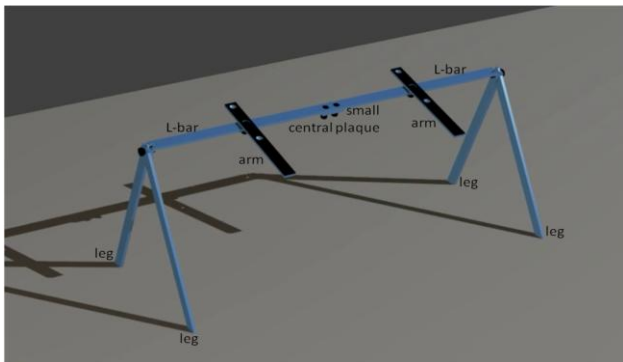
To fold **PlyGo**, follow the sequence 1 7 6 5 4 3

For further explanations, you may also write to sustainableinnovationpartners@gmail.com , or phone to +32 476016630

Disclaimer: full descriptions and setting up and folding instructions are on the www.plygo.eu site. The foldable laptop stand and its maker cannot be held responsible for falls of laptops or tablets due to wrong manipulations by users

PLYGO, LE SUPPORT PLIABLE POUR PC-LAPTOP & TABLETTE: DESCRIPTION ET INSTRUCTIONS SOMMAIRES (détails à www.plygo.eu)

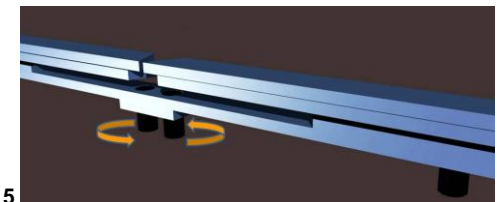
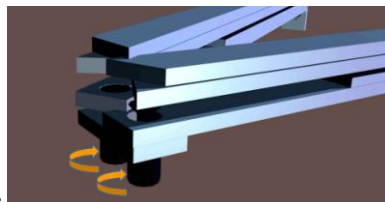
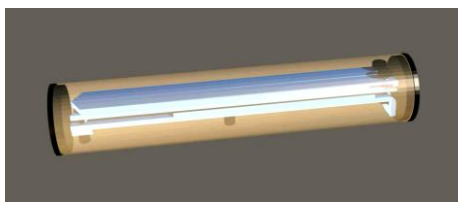
Les principaux composants du support pliable **PlyGo** sont une plaquette centrale, 2 "barres en L" transversales, 4 jambes, 2 bras tournants recouverts de Velcros de type "crochets", and 6 éléments de fixation. Pour bien maintenir PC-laptop ou tablette sur les bras de **PlyGo** , il est recommandé de bien coller sous le PC-laptop, 4 ou 6 bandes Velcro de type "laine-boucle" fournies (attendez ensuite au moins 24 h avant de placer le laptop sur les bras).



1

2

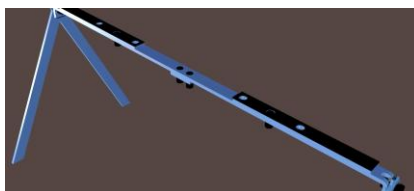
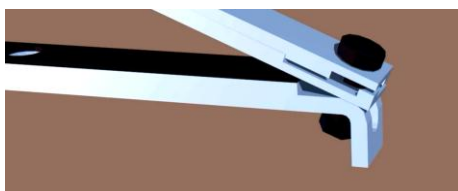
Pour déplier et monter **PlyGo**, veuillez suivre la séquence des dessins 3 4 5 6 7 1



3

4

5



6

7

Pour replier **PlyGo**, suivez la séquence 1 7 6 5 4 3

Pour plus d'explications, vous pouvez aussi écrire à sustainableinnovationpartners@gmail.com , ou téléphoner au +32 476016630

Avertissement: la description et les instructions complètes pour le montage et le re-pliage sont sur le site www.plygo.eu . Le support pliable et son producteur ne peuvent être tenus responsables de chutes de PC-laptops ou tablettes dues à des mauvaises manipulations des utilisateurs